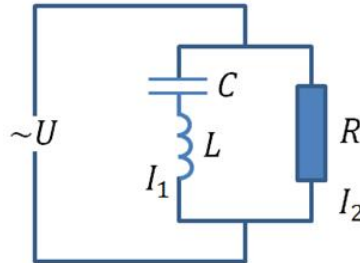


Answer on Question #77350, Physics / Electric Circuits

Question. In a circuit (inductor and capacitor connected in series which is parallel to resistor) the current in resistance R at resonance is

Solution.



$$I_1 = \frac{U}{Z_1} = \frac{U}{R_L - R_C}$$

$$I_2 = \frac{U}{Z_2} = \frac{U}{R}$$

At resonance $R_L = R_C$. So,

$$I_1 \rightarrow \infty \text{ then } I_2 \rightarrow 0$$

Answer. $I_2 \rightarrow 0$.

Answer provided by <https://www.AssignmentExpert.com>