

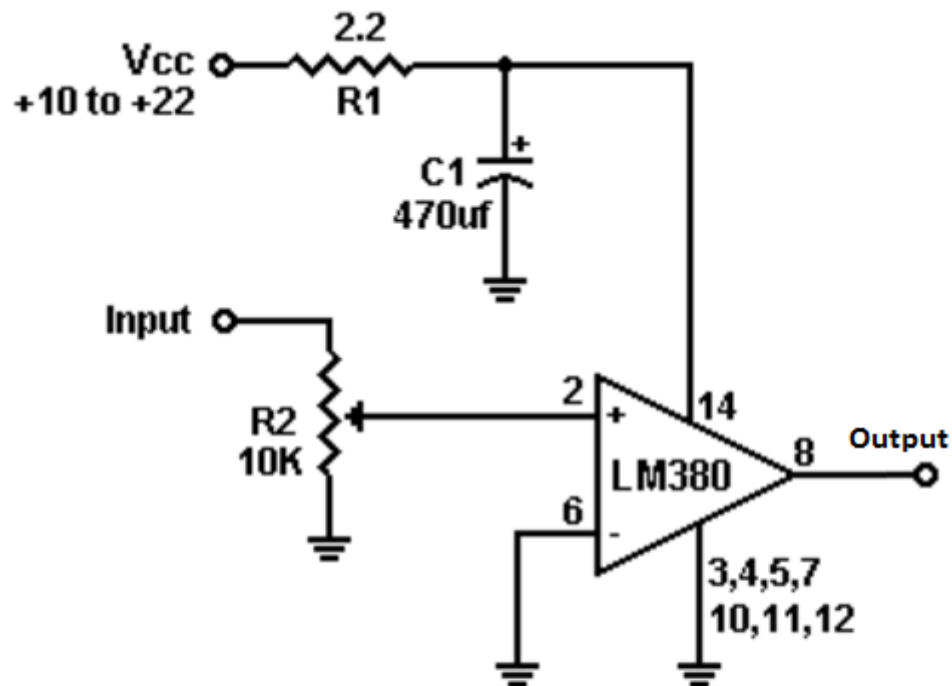
Answer to Question #69493, Physics / Electric Circuits

Question:

Draw a circuit of amplifier of gain 50 using IC 380. Use the non-inverting terminal as input signal terminal.

Solution:

IC Lm380 initially has a voltage gain of 50, so the circuit goes as follow:



Where (2) is a non-inverting input of the input of the IC