

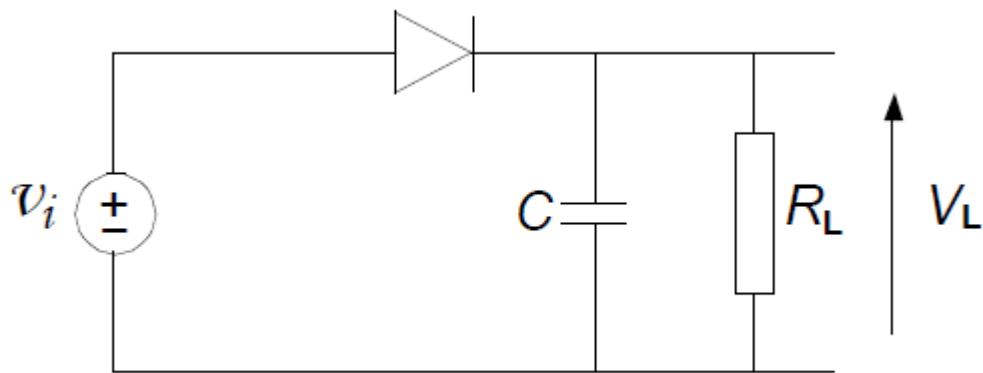
Answer on Question #69484, Physics / Electric Circuits

a) Use superposition principle to find the current flowing through R_2 in Fig.1.

Answer: no Fig.1

b) Explain with a neat diagram application of p-n junction diode as a peak voltage detector.

Answer:



The waveform resulted from the half-wave or full-wave rectifier can be converted to a nearly constant level by using a capacitor as a simple filter.

This circuit can be used to detect the peak value of the input signal.

As in the half-wave case, the output voltage will be almost equal to the peak value of the input signal.

Answer provided by AssignmentExpert.com