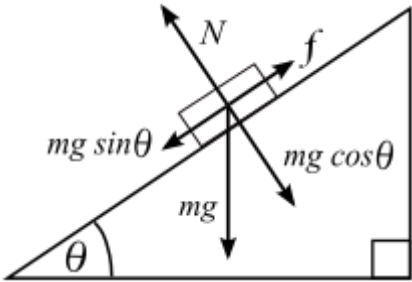


Answer on Question #64168 – Physics – Mechanics | Relativity

Question:

A man slides down on a slide when it is inclined at 32° . What is the coefficient of friction between the man and the slide?

Solution:



$$f = \mu N = \mu mg \cos \theta ;$$

$$f = mg \sin \theta ;$$

$$\mu mg \cos \theta = mg \sin \theta \Rightarrow \mu = \frac{\sin \theta}{\cos \theta} = \tan \theta = 0.625 ;$$

Answer: $\mu = 0.625$.

Answer provided by <https://www.AssignmentExpert.com>