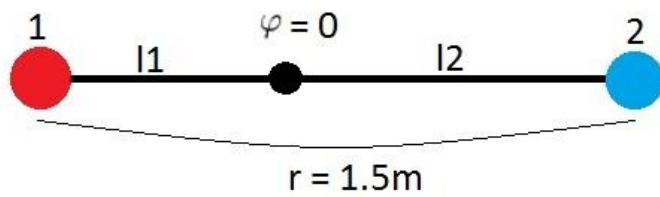


Answer on Question #58774, Physics - Electric Circuits



$$\varphi = k \frac{q}{l}$$

$$\varphi_1 + \varphi_2 = 0$$

$$\begin{cases} k \frac{q_1}{l_1} = k \frac{q_2}{l_2} \Rightarrow l_1 = l_2 \\ q_1 = q_2 \end{cases}$$

$$\Rightarrow l_1 = 0.75\text{m and } l_2 = 0.75\text{m}$$