

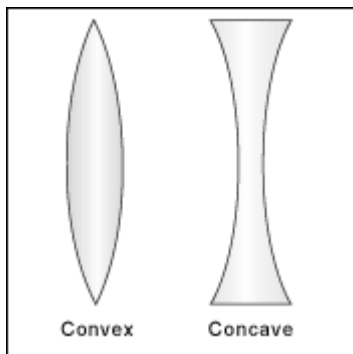
Question:

The lens of the human eye is

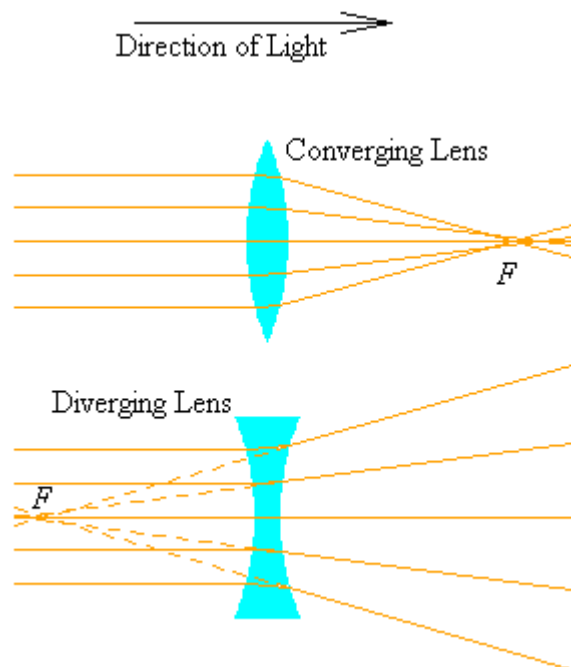
- concave
- converging
- planconcave
- diverging

Answer:

On the contrary to convex lens, concave lens is thicker at the middle:

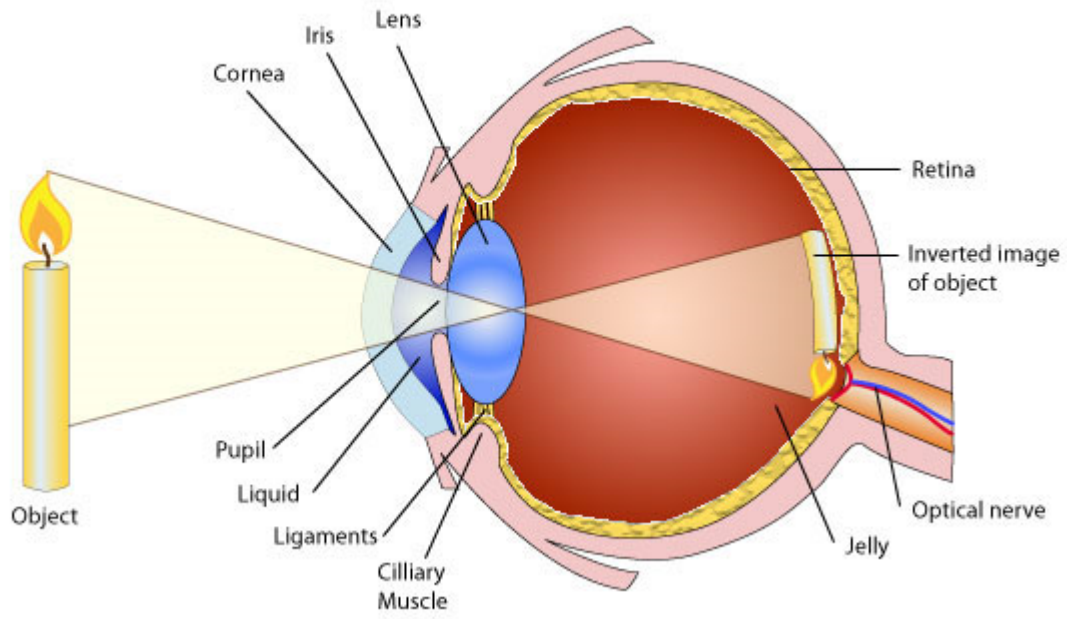


Planconcave is concave lens at one side and straight at the other side. Converging and diverging are lens classifications according to the position of focal point:



Human includes a convex converging lens:

Cross section of Human Eye



Correct answer is **converging**.

<http://www.AssignmentExpert.com/>