

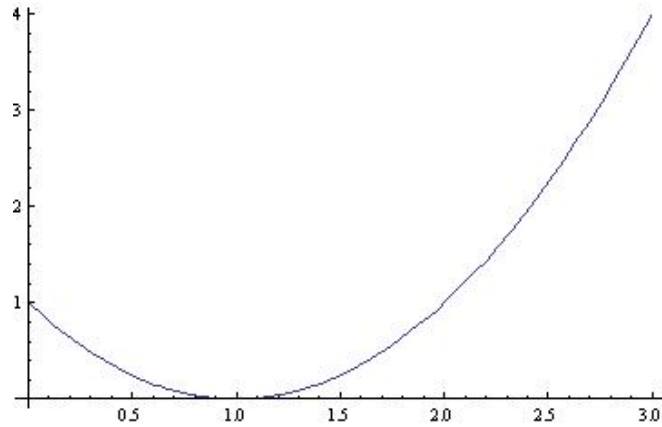
Question #8546 consider the curve $y = x^2 - 2x + 1$.

a) sketch the curve over the range $x = 0$ to $x = 3$

b) evaluate the area bounded by the curve and the x-axis between the limits $x=0$ and $x=1$.

Solution.

1)



2) This area equals $\int_0^1 (x - 1)^2 dx = 1/3(x - 1)^3 \Big|_{x=0}^{x=1} = 1/3$.