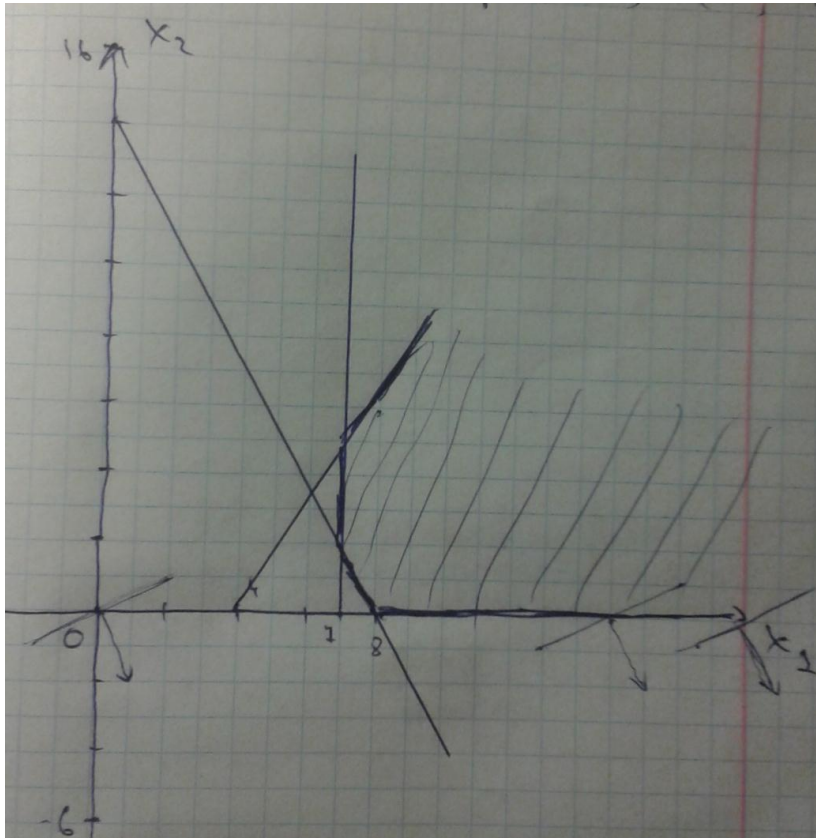


TASK:

$$\begin{aligned} & \text{Maximize } z = x_1 - 2x_2 \\ & \begin{cases} 2x_1 + x_2 \geq 16 \\ 3x_1 - 2x_2 \geq 12 \\ x_1 \geq 7, x_2 \geq 0 \end{cases} \end{aligned}$$

SOLUTION (graphical):

$$\text{grad}(z) = (1; -2)$$



Answer: Undefined maximum of a function.