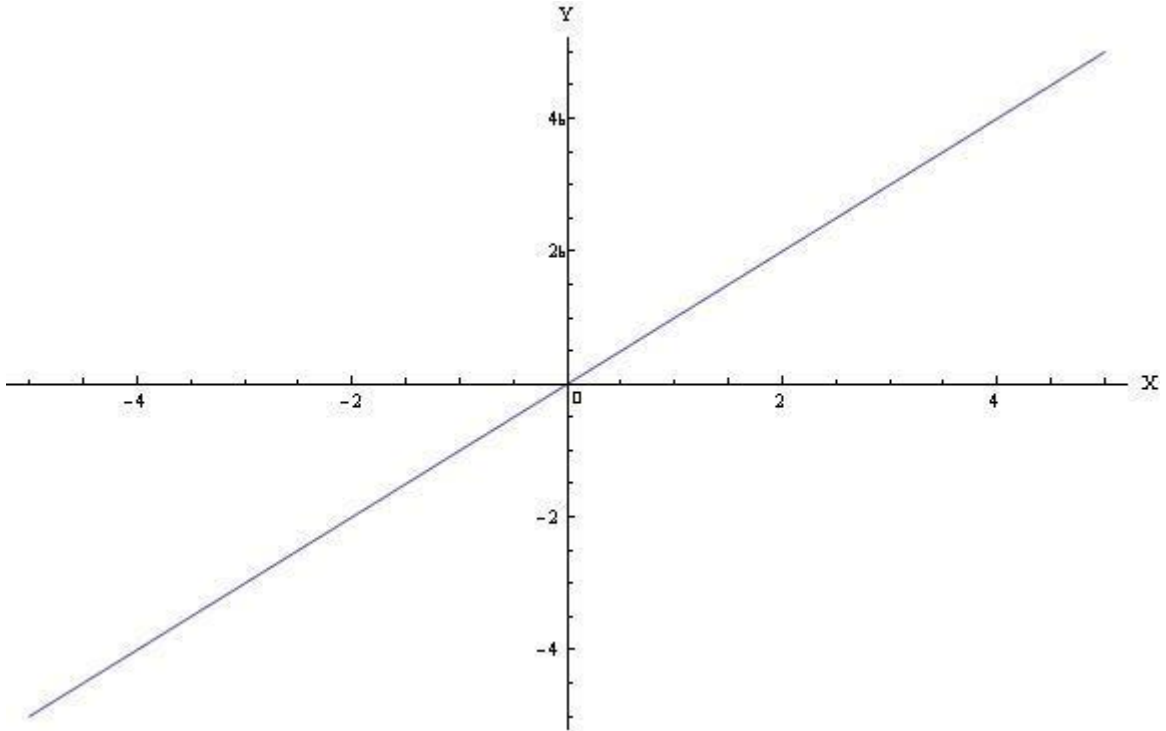


Answer on Question #48137 – Math – Calculus

1. For the graph of $y = bx$, the domain is?

Solution.

At first, we can draw the graph of this function:



We see that this line can be continued in both directions of X-axis to infinity. Hence, the domain of this function is interval $(-\infty; \infty)$.

Answer:

$$x \in (-\infty; \infty).$$