

Answer on Question #44227 - Math - Statistics and Probability

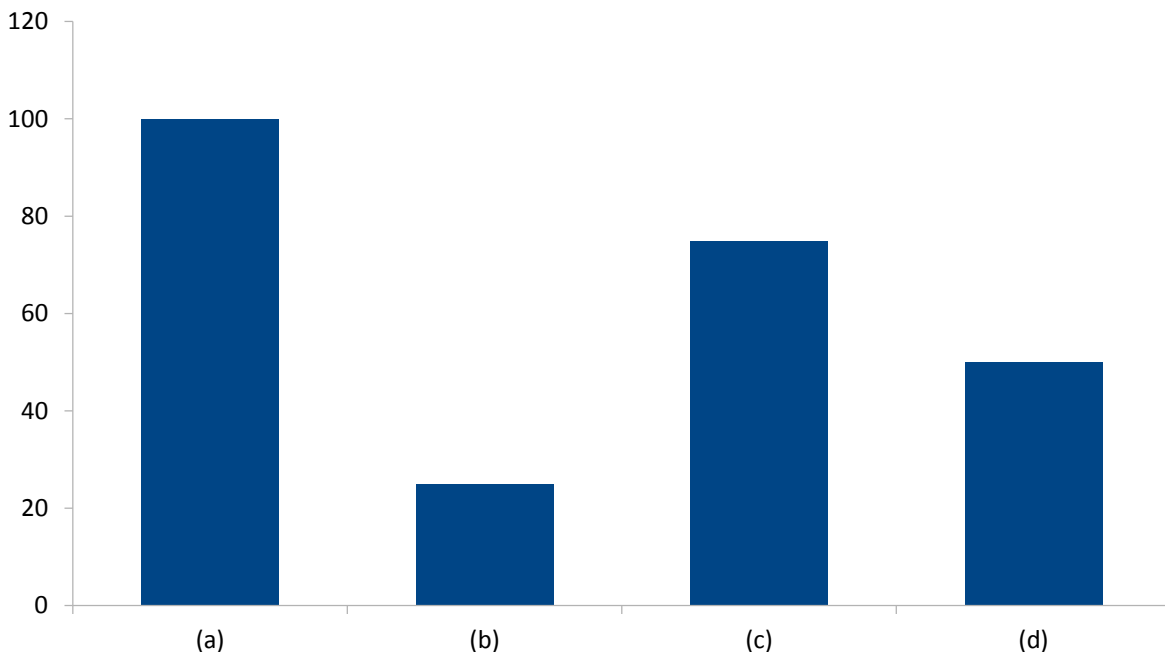
2.4 A multiple choice question on an exam has four possible responses—(a), (b), (c), and (d). When 250 students take the exam, 100 give response (a), 25 give response (b), 75 give response (c), and 50 give response (d).

a. Write out the frequency distribution, relative frequency distribution, and percent frequency distribution for these responses.

Class	Frequency	Relative frequency	Percent frequency, %
(a)	100	0.5	50
(b)	25	0.125	12.5
(c)	75	0.375	37.5
(d)	50	0.25	25
Total	200	1	100

b. Construct a bar chart for these data using frequencies.

Bar chart for frequency:



Bar chart for relative frequency:

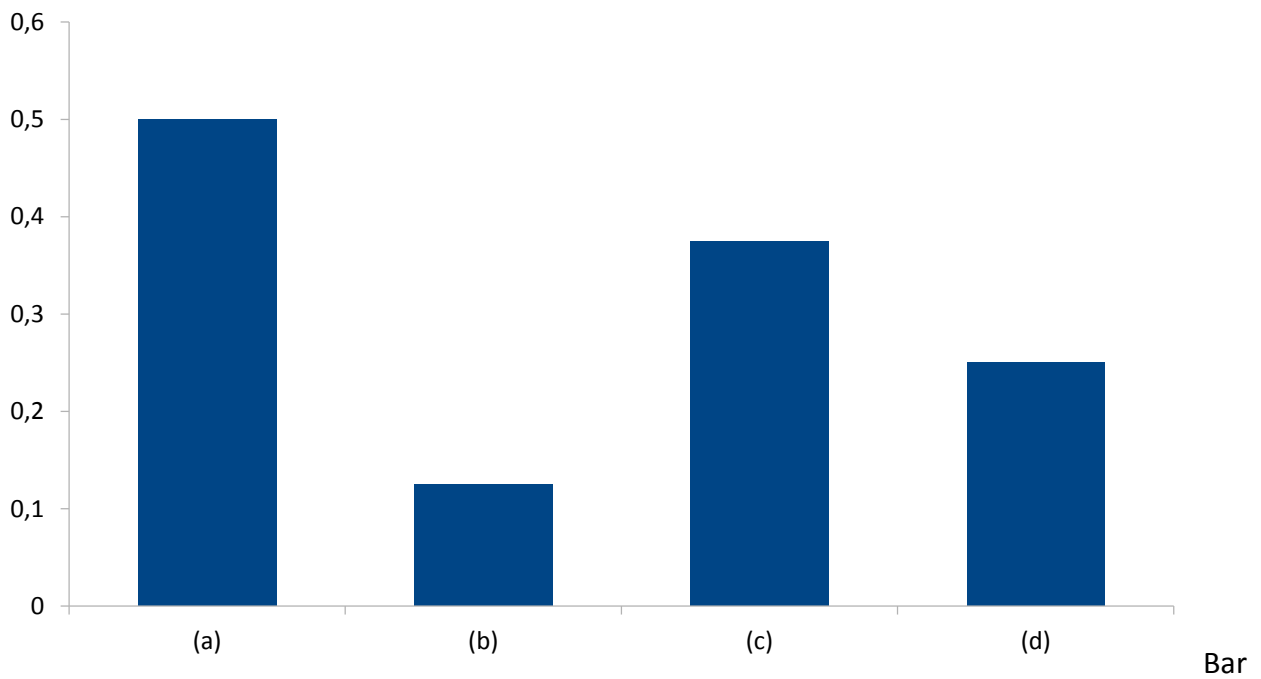


chart for percent frequency:

