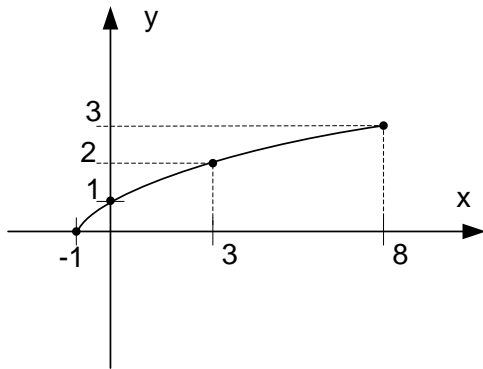


Graph the given function using the given values of x. Also use the graph to determine the domain and range of the function.

$$g(x) = (\text{square root of } x+1) + 2; x = -1, 0, 3, 8$$

$$g(x) = \sqrt{x+1} + 2$$

x	-1	0	3	8
g(x)	0	1	2	3



the domain is $[-1, \infty)$

the range $[0, \infty)$