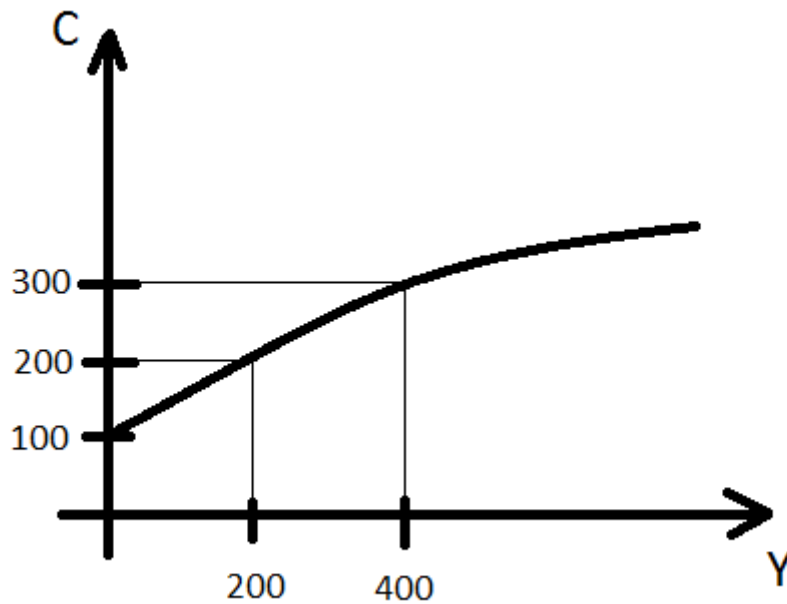


Answer on Question #64870 - Economics – Macroeconomics

When  $Y=C$ , then  $C = 100+0.5 Y$  and  $C=100+0.5C$ ,  $0.5C=100$ ,  $C=200$ , So then  $Y=C=200$ .

Graph this function:



Answer provided by <https://www.AssignmentExpert.com>