

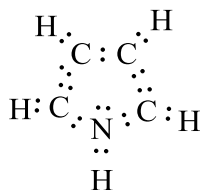
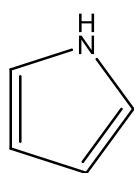
Question #63230, Chemistry / General Chemistry

Chapter 9 (9.99)

Consider the molecule C₄H₅N, which has the connectivity shown below.

1) After the Lewis structure for the molecule is completed, how many σ and how many π bonds are there in this molecule?

Answer:



10 σ and 2 π bonds are there in this molecule.

<https://www.AssignmentExpert.com>